








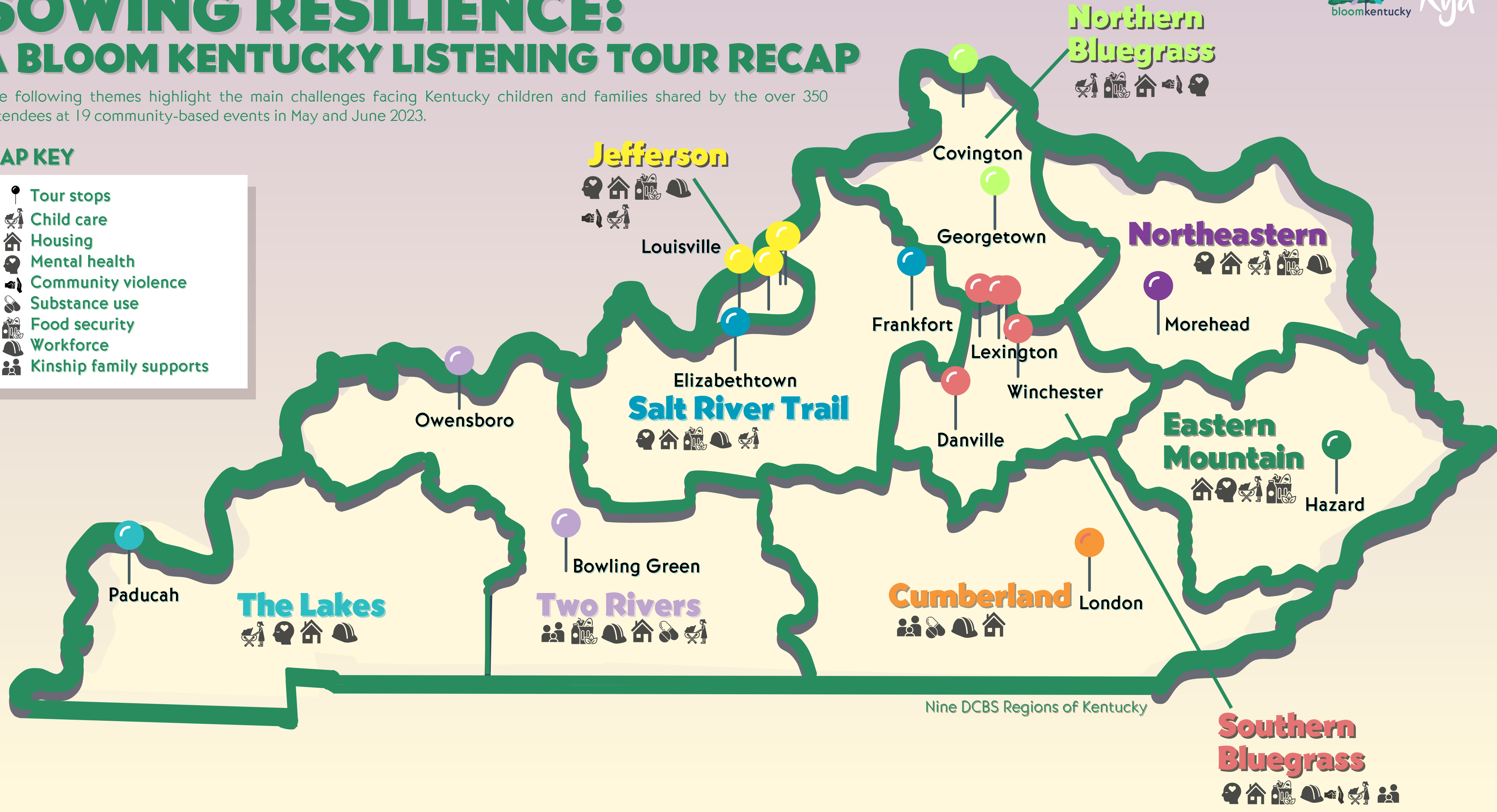


SOWING RESILIENCE: A BLOOM KENTUCKY LISTENING TOUR RECAP

The following themes highlight the main challenges facing Kentucky children and families shared by the over 350 attendees at 19 community-based events in May and June 2023.

MAP KEY

-  Tour stops
-  Child care
-  Housing
-  Mental health
-  Community violence
-  Substance use
-  Food security
-  Workforce
-  Kinship family supports



Nine DCBS Regions of Kentucky