



CABINET FOR HEALTH
AND FAMILY SERVICES

Promoting Well-Being in Communities through Prevention

Valerie Frost, Strategic Initiatives Associate

Kentucky Youth Advocates (KYA)

Mary Carpenter, Executive Advisor

Department for Community Based Services (DCBS)

About Kentucky Youth Advocates

Partner with legislators, the Governor, and other elected officials to change and enact policies that benefit youth and their families



Our case advocacy program guides families, when they don't know where to turn



Mobilize advocates to take action through rallies, advocacy training, partnerships, and action alerts



Conduct research and education that informs and recommends solutions to help kids succeed



Present the "state of kids" to communities to help people know how children are fairing and how to address problems



Engage youth by training the next generation of leaders to advocate for themselves and their communities



Agency Overview

DEPARTMENT FOR COMMUNITY BASED SERVICES

PROTECTION & PERMANENCY

Child and Adult Protective Services



FAMILY SUPPORT

MEDICAID ELIGIBILITY, THE STATE SUPPLEMENTAL PROGRAM, TEMPORARY ASSISTANCE FOR NEEDY FAMILIES (TANF), SUPPLEMENTAL NUTRITION ASSISTANCE PROGRAM (SNAP), LOW INCOME HOME ENERGY ASSISTANCE PROGRAM, AND THE COMMUNITY SERVICES BLOCK GRANT

PREVENTION

Primary, Secondary, and Tertiary Prevention Services



CHILD CARE

Oversees the Child Care Assistance Program (CCAP), the child care quality rating system, professional development, and contracts



What would the child welfare system look like here...

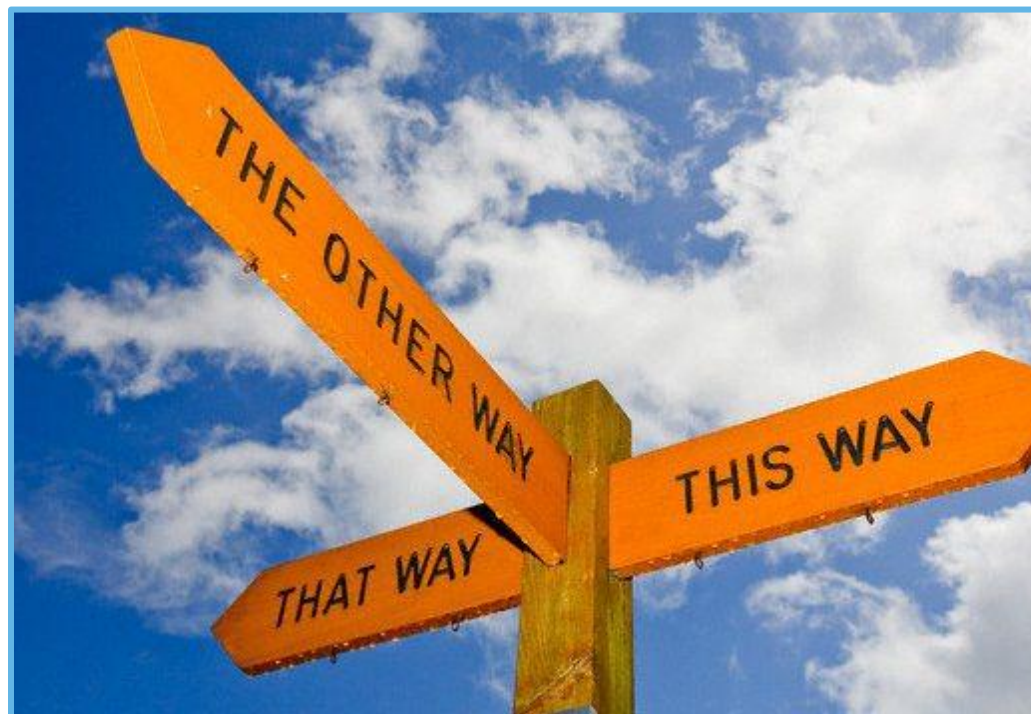


...reimagined?



Historic Challenges

- Increasing numbers in care
- Unmanageable caseloads for workers
- Inadequate funding
- High use of residential placements
- Disproportionality and disparate outcomes
- Mandatory reporting/child welfare agency as one stop shop
- Stigma related to child welfare agency involvement
- Differentiating safety and risk
- Differentiating poverty and neglect

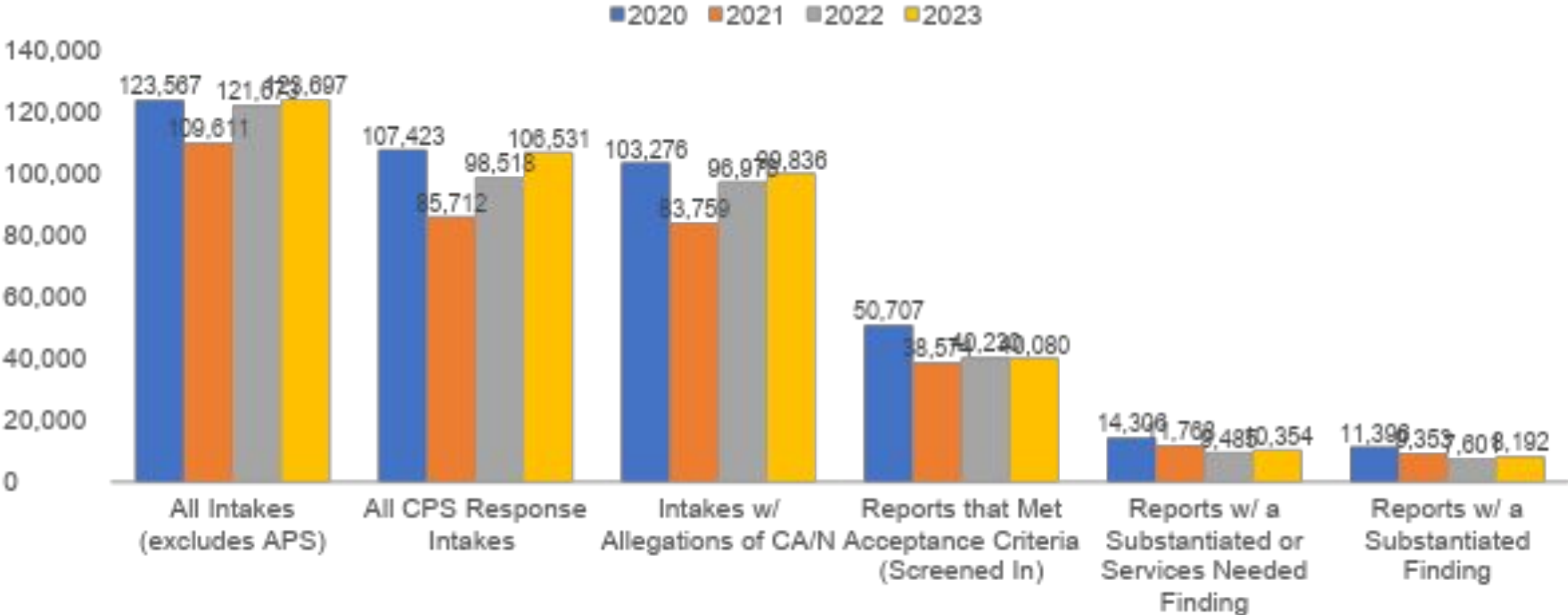


This Photo by Unknown Author is licensed under CC BY

MAKING SURE OUR JOURNEY GETS US TO THE RIGHT DESTINATION: WHY DO FAMILIES COME TO THE ATTENTION OF THE CHILD WELFARE AGENCY?

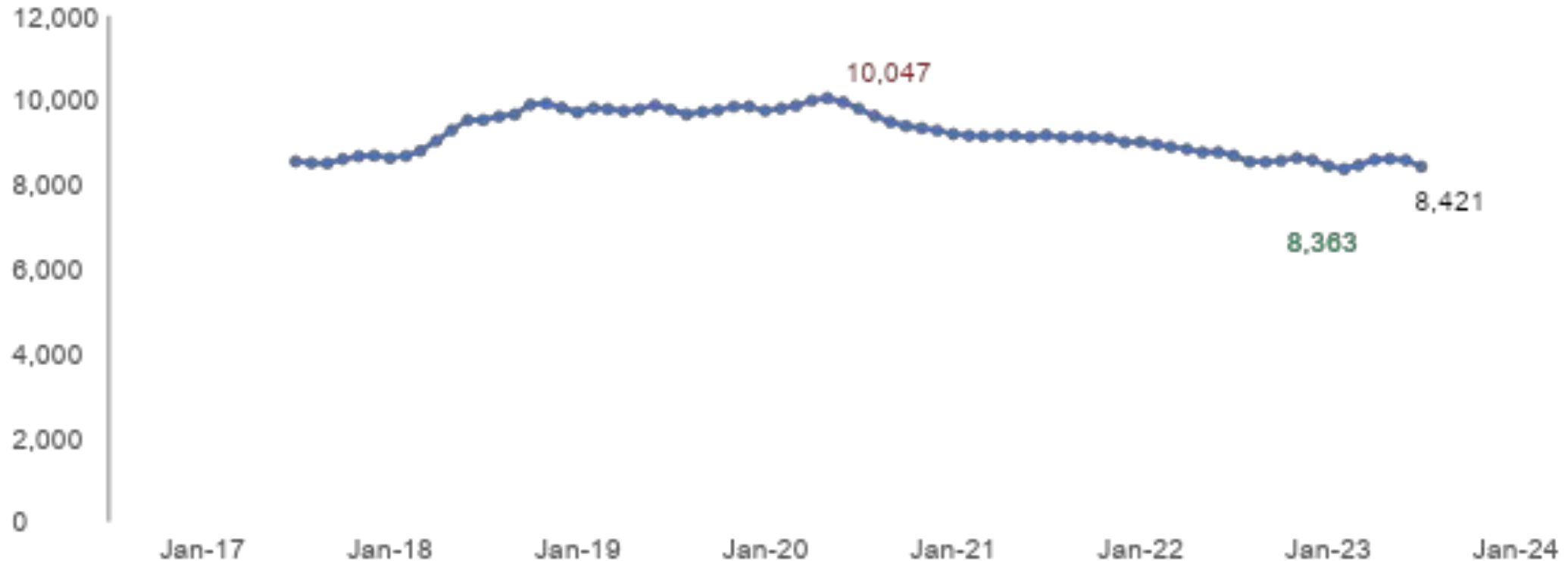
Child Protective Services (CPS) Intakes

SFY 2020 – SFY 2023



Statewide: Children in the Custody of or Committed to the Cabinet

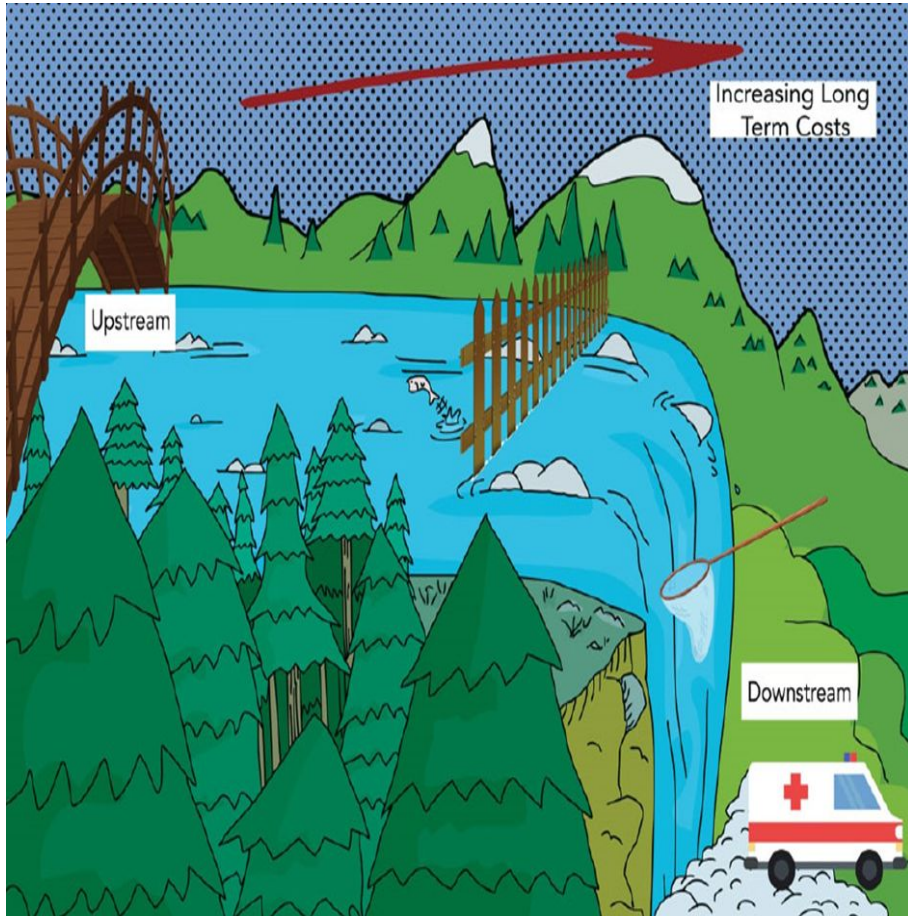
July 2017 – July 2023





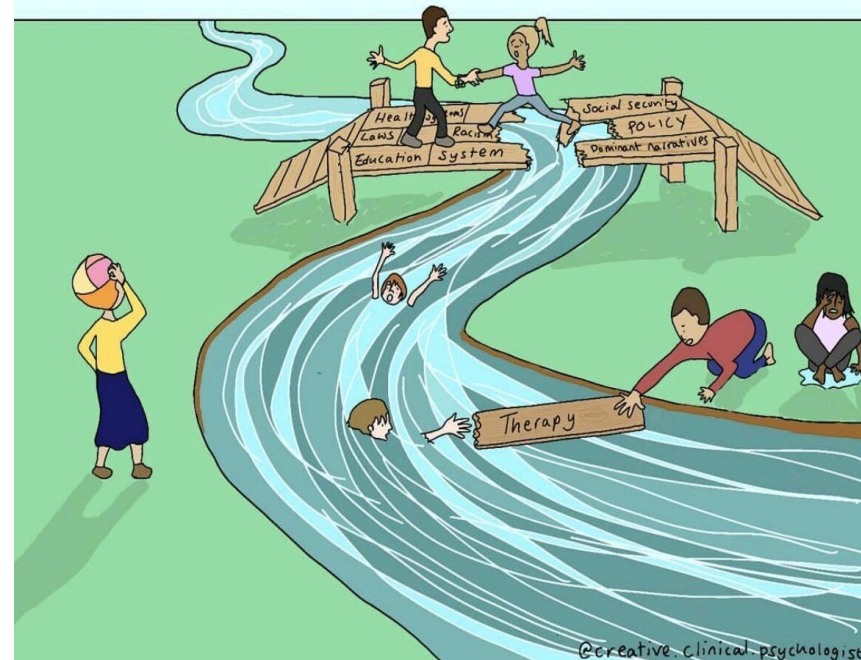
FAMILY FIRST PREVENTION SERVICES ACT: OUR PREVENTION JOURNEY BEGINS

Moving Upstream



Credit: Tribal Epidemiology Centers

There comes a point where we need to stop just pulling people out of the river. Some of us need to go upstream and find out why they are falling in. (Desmond Tutu)



Credit: [@creativeclinicalpsychologist](https://www.instagram.com/creativeclinicalpsychologist)

Kentucky's Blueprint for Prevention

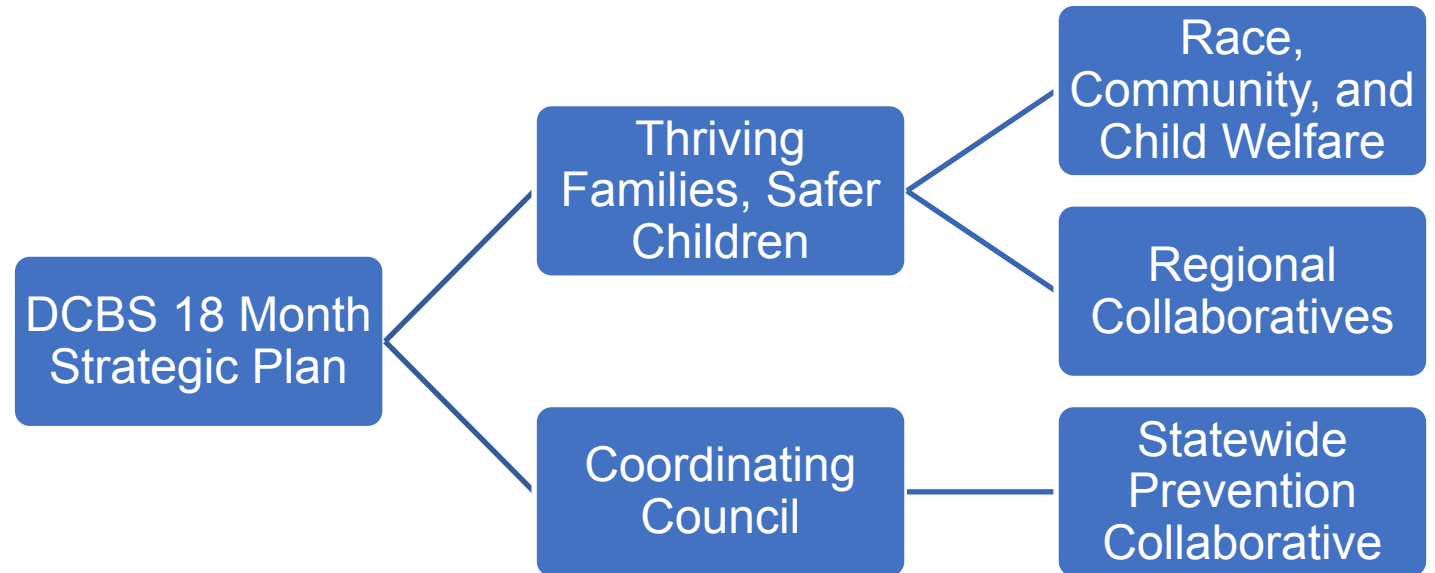


21st CENTURY DCBS
Decreasing Barriers **Progress** *Increasing Access*
SPRING 2023



- Trusted Advisors Council
- Highlights
 - High emphasis on incorporating the voice of lived experience to inform policy, programming and practice
 - Goal to replicate best practices of the Neighborhood Place and Communities of Hope models in regions across the state
 - Increasing access to resources and services for families, including use and functionality of KYNECT
 - Statewide expansion of Community Response
 - Racial equity audit recommendations
 - Reduce indirect/unintentional negative policy impacts on people living in poverty

18 Month Strategic Plan



Kentucky's Prevention Framework



- Division of Prevention and Community Well-Being
- Thriving Families, Safer Children KY
- Statewide Prevention Collaborative





Thriving Families, Safer Children: Kentucky Priorities

- Development of a robust network of community-based prevention supports
- Creation of formalized structures to serve families “screened out” by the Kentucky Department for Community Based Services
- Clearly differentiating poverty and neglect
- Development of a statewide collaborative primary/secondary prevention plan
- Creation of a Parent Advisory Council

Moving towards Structural Well-Being

- Structural Racism in the U.S. is the normalization and legitimatization of an array of dynamics – historical, cultural, institutional & interpersonal, that routinely advantage white people while producing cumulative and chronic adverse outcomes for people of color.
- It is this normalization that then binds together white controlled institutions – interlocking them into larger systems of power and control.



This Photo by Unknown Author is licensed under [CC BY-SA-NC](https://creativecommons.org/licenses/by-sa/4.0/)

Race, Socioeconomic Status, and Child Welfare

- Family income is the greatest predictor of entry into care.
- Families living below poverty line are over 40 times more likely to enter child welfare system than median income families.
- Nationally, more than 70% of children in poverty are children of color.
- 53% of Black children experience a CPS investigation by age 18.
- In Kentucky, 13.1% of reports involved children who are Black. This is disproportionate to 9% representation in the general child population.

Sources: (Rostad, 2017), (Sedlak, 2010), (Kids Count, 2020), (CHFS June 2023 Disproportionality Data)



Credit: [To End Disproportionality in Child Protection. Here's Where to Look - Evident Change](#)

Health Equity Audit & Impact Assessment

- Over the past two years, DCBS engaged in a process to evaluate the systems and processes that produce data and ask intentional questions about why we have that data & where we go from here
- What does implementation of FFPSA mean, what additional data is needed, & engagement of impacted populations in the discovery of & development of more equitable implementation of services



Shifting from Surveillance to Support



Kentucky began implementing a new safety model in 2020, clearly defining safety and risk based on research and federal definitions and implemented new safety and prevention plans.



Structured decision making tools were implemented for assessment of safety and risk and planned implemented for risk re-assessment.



Piloting community response for reports that do not meet criteria for abuse or neglect



Alternative Response is being implemented beginning in September 2023..Family centered and strengths-based approach to reports that meet acceptance criteria.

Peer Support in Kentucky

- Peer support encompasses a range of activities and interactions between people who share similar experiences of being diagnosed with mental health conditions, substance use disorders, or both and has existed in Kentucky for behavioral health for years
- A peer support worker is someone with the lived experience of recovery from a mental health condition, substance use disorder, or both. They provide support to others experiencing similar challenges.
 - ❖ inspire hope that people can and do recover;
 - ❖ walk with people on their recovery journeys;
 - ❖ dispel myths about what it means to have a mental health condition or substance use disorder;
 - ❖ provide self-help education and link people to tools and resources; and
 - ❖ support people in identifying their goals, hopes, and dreams, and creating a roadmap for getting there.
- DCBS will be intentionally rolling out peer support with Alternative Response to provide additional resources for families.



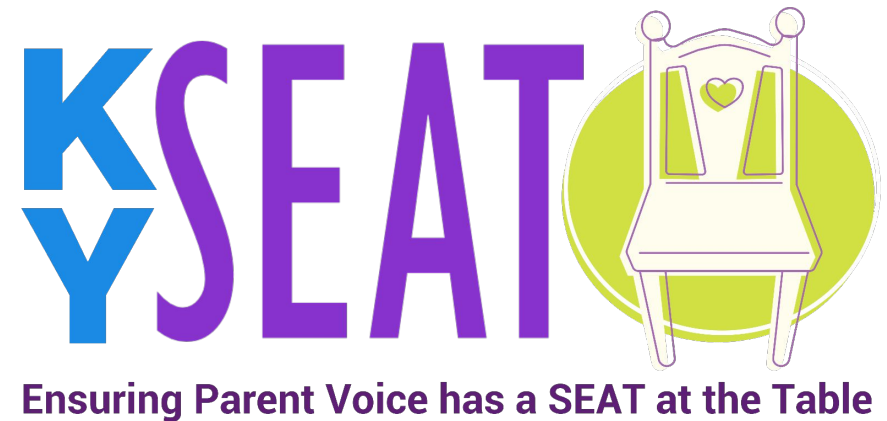
Partnership and Community Engagement

- DCBS is the child welfare agency, not the child welfare system.
- Real change has to be family, youth, and community driven.
- Increased investments in primary and secondary prevention to help families avoid child welfare involvement.



Kentucky Statewide Birth Parent Advisory Council

- Voice for parents
- Advocate for equity and resources for families
- Empower parents to feel supported and informed



Community Action Plans for Prevention



Photo credit: [Protective Factors Approaches in Child Welfare](#)

- Specific to each of the nine DCBS service regions
- Visioning Sessions held in May-June of 2022
- Community-led and community driven strengthening
- 2023: Phase II Implementation

Primary Prevention & Protective Factors

- Safe, stable housing
- High-quality preschool
- Nurturing and safe childcare
- Safe, engaging after school programs and activities
- Medical care and mental health services
- Economic and financial help
- Work opportunities with family-friendly policies

(from [Risk and Protective Factors|Child Abuse and Neglect|Violence Prevention|Injury Center|CDC](#))



Photo credit [Center for Engagement and Neighborhood Building \(alliance1.org\)](#)

Resources for Community-Work Planning



- Outreach and facilitation
- Action Plan template
- Execution tracker
- Primary Prevention glossary

Community-Action-Plan-Toolkit.pdf (kyyouth.org)



S **M** **A** **R** **T**

SPECIFIC
Be clear and specific so your goals are easier to achieve. This also helps you know how and where to get started!

MEASURABLE
Measurable goals can be tracked, allowing you to see your progress. They also tell you when a goal is complete.

ACTIONABLE
Are you able to take action to achieve the goal? Actionable goals ensure the steps to get there are within your control.

REALISTIC
Avoid overwhelm stress and frustration by making the goal realistic.

TIMEBOUND
A date helps us stay focused and motivated, inspiring us and providing something to work towards.

SMART GOALS EXPLAINED

THE COACHING TOOLS COMPANY.COM

Kentucky specific primary prevention (universal) examples:



Two Rivers Region: Action Plan

Connecting Communities to Support Families and Well-Being

| Prevention Strategies | Prevention Objectives | Levels of Prevention Addressed (Primary and/or Secondary) | Projected Timeline (Short term or Long Term) | Ranking (From Comment Period Feedback) |
|---|--|---|--|--|
| Prevention Strategy 1: Reduce truancy and/or educational neglect | Expand the Parent Engagement Meeting (PEM) model to Warren County schools. | Secondary | Long term: 12+ months | 4 |
| | Advertise success rates for Parent Engagement Meeting (PEM) interventions. | Secondary | Short Term 3-6 months | 5 |
| | Coordinate a team to align on using interventions prior to child removal from the home due to school attendance. | Secondary | Short term 3-6 months | 1 |
| | Expand the public messaging campaign on the importance of school attendance. | Primary | Short term: 3-6 months | 2 |
| | Launch a positive messaging campaign around parent involvement. | Primary | Short term: 6 months | 3 |
| Prevention Strategy 2: Increase the number of family caregivers accessing resources | Distribute up-to-date resource referral information. | Primary | Short term: 3-6 months | 1 |
| | Increase intentional outreach efforts for family engagement. | Primary | Short and long term 3-12+ months | 2 |
| Prevention Strategy 3: Strengthen community partnerships and resource sharing by connecting all relevant stakeholders | Include the faith community in the communication network by identifying 5 church partner liaisons in the region. | Primary and secondary | Short term: 3-6 months | n/a |

How Communities Can Get Involved

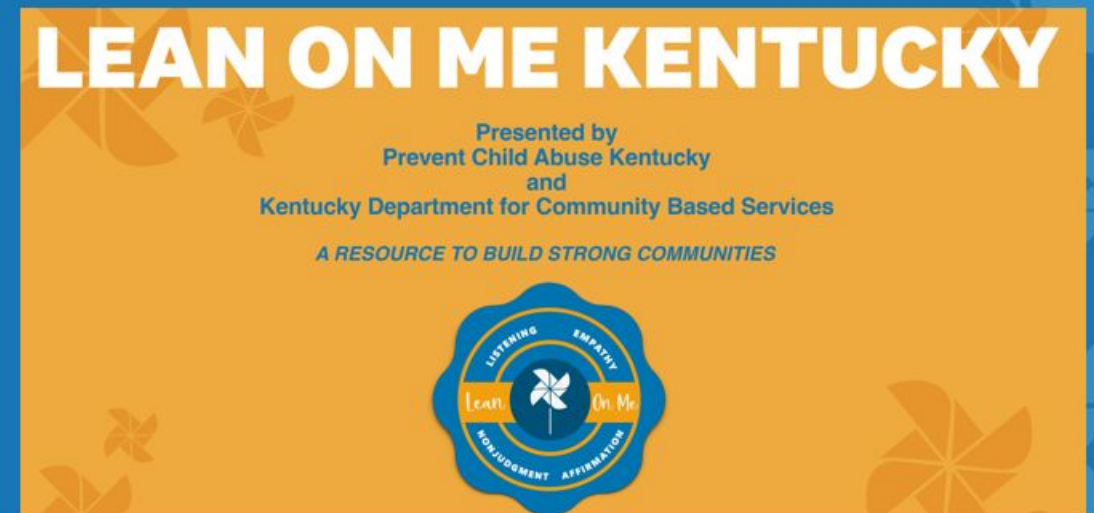
- Assess your area for available community protective factors
- Connect families to resources
- Be a support, meet a need
- Stay informed on statewide prevention efforts

[TFSCKY – Kentucky Youth Advocates](#)

[Two-Rivers-Region Action-Plan.pdf \(kyyouth.org\)](#)

Lean on Me Kentucky, Let's Start the Conversation of becoming a *Community Supporter*

- Frameworks and Communications Science
- 9 Focus Groups, DCBS Service Regions
- Toolkit
 - Videos
 - Action cards
 - Pledge
 - Resources/trainings
- Official launch March 27th!



My Reaction Story

- Voluntary help-seeking led to reporting
- Strengths and protective factors overlooked
- Saw an unmet advocacy need



The “Why” of Prevention



“Every child deserves a safe, stable and permanent family and all families deserve the opportunities and supports to raise their children safely and successfully in their own homes, communities and cultures,” said William C. Bell, President and CEO of Casey Family Programs. “This important effort will demonstrate how all sectors of a community can work together to reallocate resources into equitable, hope-inspiring services and supports that reduce the need for foster care and improve the well-being of children and families across the nation.”

[Source: First-of-its-Kind National Partnership Aims to Redesign Child Welfare Into Child- and Family Well-Being Systems | The Administration for Children and Families \(hhs.gov\)](#)

Prevention: Learn from Us!



To stay up-to-date on prevention efforts in Kentucky, visit kyyouth.org/tfscky

Presenter Contact Info:

Valerie Frost vfrost@kyyouth.org

Mary Carpenter Mary.Carpenter@ky.gov



Questions?

